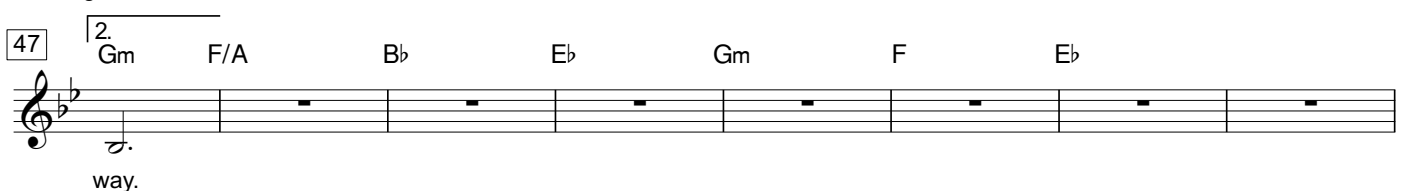
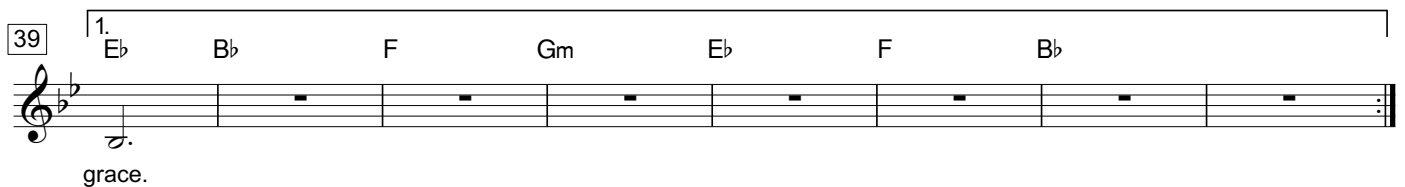
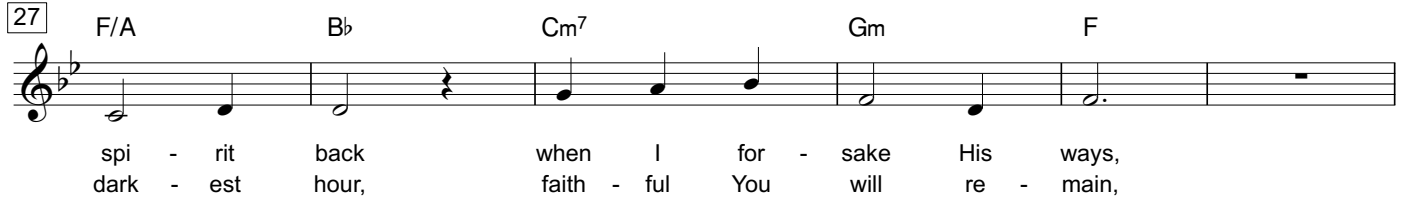
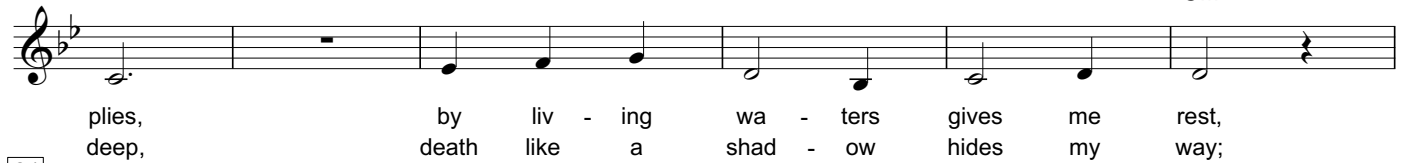
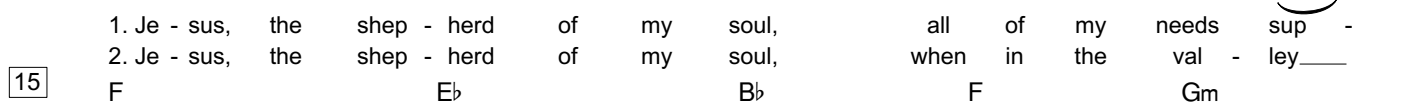


JESUS THE SHEPHERD OF MY SOUL (PSALM 23)

Words and Music by Jon Althoff and Marc Willerton



63 **VERSE 3** $B\flat$ $B\flat$ $B\flat$ $B\flat$ $B\flat$ $B\flat$

3. Je - sus the shep - herd of my soul,

69 $F/B\flat$ $E\flat/B\flat$ $B\flat$

keep - ing me from all harm, ev - er un - til He

75 $F/B\flat$ $G/B\flat$ $E\flat/B\flat$ $F/B\flat$ $B\flat$ $B\flat$ $B\flat$

leads me home, safe - ly in - to His arms.

81 $E\flat$ $B\flat$ F $B\flat$ $E\flat$ $B\flat$

When I be - hold Him face to face, then I will look and

87 F $B\flat/D$ $E\flat$ $B\flat$ F Gm

see good - ness and mer - cy from His hand

93 $E\flat$ F $B\flat$ $B\flat$ $E\flat$ **TAG** $B\flat$

sure - ly have fol - lowed me. When I be - hold Him

99 F $B\flat$ $E\flat$ $B\flat$ Dm^7

face to face, then I will look and see

105 $E\flat$ $B\flat$ F Gm $E\flat$ F

good - ness and mer - cy from His hand sure - ly have fol - lowed

111 Gm $E\flat$ F $E\flat$ $B\flat$

me, sure - ly have fol - lowed me.

117 F Gm $E\flat$ F $B\flat$