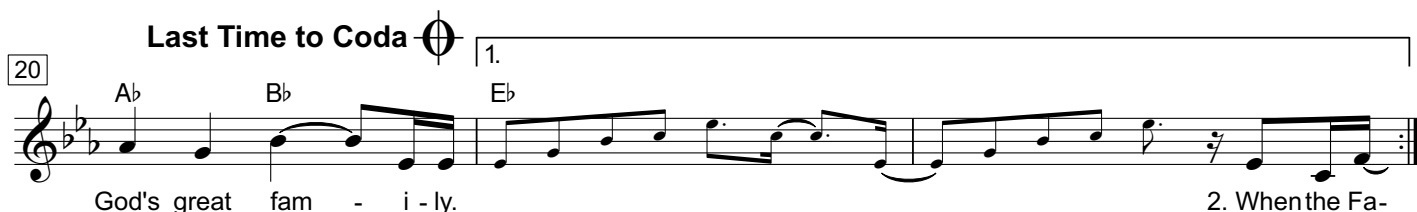
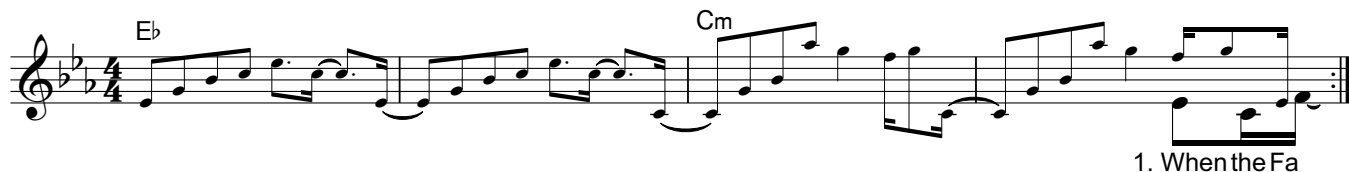


# GOD'S GREAT FAMILY

p. 1 of 2

♩ = 96

Music and Words by Jon Althoff and Bob Kauflin



23 2. **BRIDGE**

*E<sub>b</sub>* *Cm*

When He calls, when He draws, we are

26

*A<sub>b</sub>* *B<sub>b</sub>* *Cm*

His for - ev - er. He will nev - er let you go, He will

28 1. 2. **D.S. al Coda**

*A<sub>b</sub>* *E<sub>b</sub>* *A<sub>b</sub>* *B<sub>b</sub>* *Cm* *B<sub>b</sub>*

nev - er let you go. When He nev - er let you go. Oh, oh,

31 Coda *E<sub>b</sub>* *Cm* *repeat ad lib* *E<sub>b</sub>*