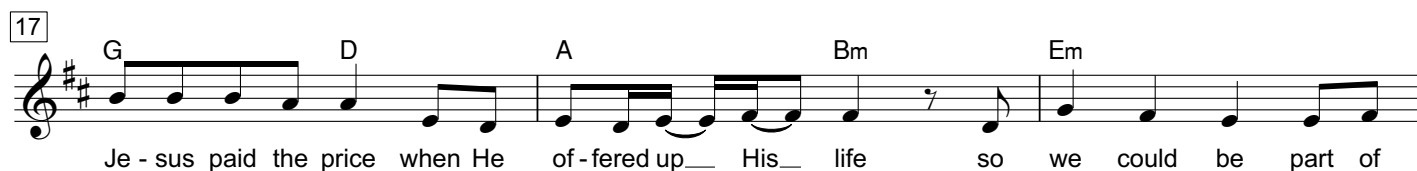
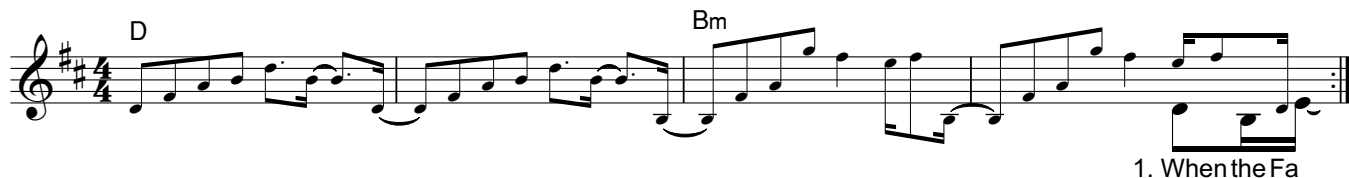


GOD'S GREAT FAMILY

p. 1 of 2

♩ = 96

Music and Words by Jon Althoff and Bob Kauflin



23 2. BRIDGE Bm

When He calls, when He draws, we are

26 G A Bm

His _____ for - ev - er. He will nev - er _____ let _____ you _____ go, He will

28 1. 2. **D.S. al Coda** G D G A Bm A

nev - er _____ let _____ you _____ go. When He nev - er _____ let _____ you _____ go. Oh, oh,

31 Φ D Bm *repeat ad lib* D